

MONTHLY MEMBERSHIP PROGRESS REPORT

LOCATION AUSTRALIA

District 201W1

Results as of: 2/28/2022

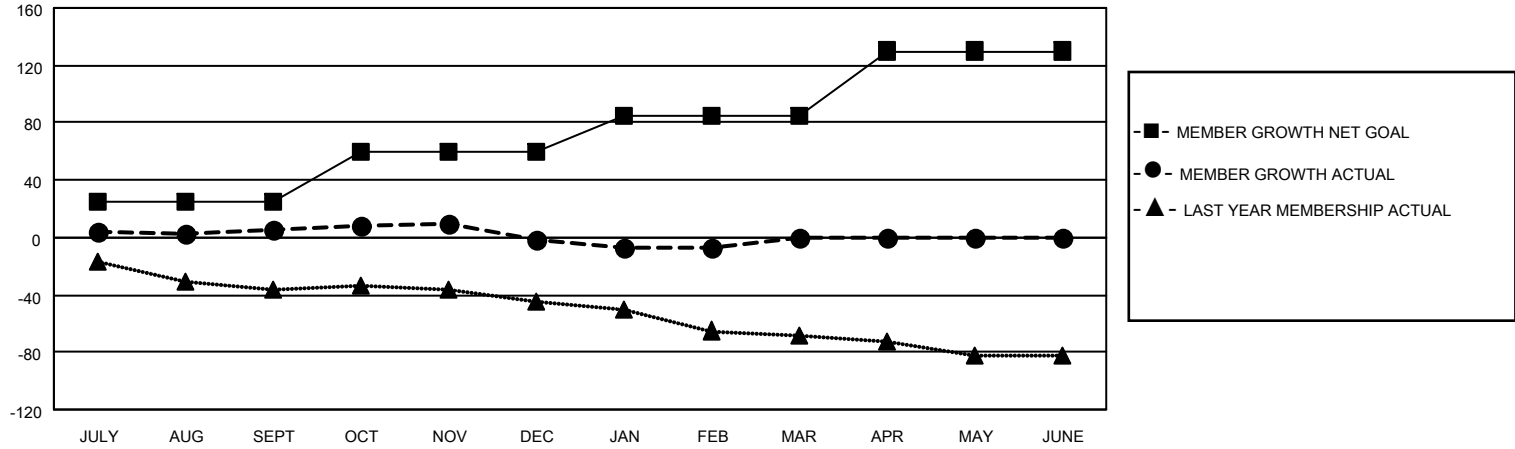
| Clubs | | | |
|-----------------------|---------------|-----------|---------------|
| RESULTS FOR 2021-2022 | | | |
| QUARTER | NEW CLUB GOAL | NEW CLUBS | DROPPED CLUBS |
| JULY/AUG/SEPT | 0 | 0 | 1 |
| OCT/NOV/DEC | 0 | 0 | 0 |
| JAN/FEB/MAR | 0 | 0 | 0 |
| APR/MAY/JUNE | 1 | 0 | 0 |

| Members | | | |
|-----------------------|------------------------|----------------------|--|
| RESULTS FOR 2021-2022 | | | |
| QUARTER | MEMBER GROWTH NET GOAL | MEMBER GROWTH ACTUAL | DROPPED MEMBERS ACTUAL (including transfers) |
| JULY/AUG/SEPT | 25 | 20 | 12 |
| OCT/NOV/DEC | 35 | 18 | 24 |
| JAN/FEB/MAR | 25 | 6 | 12 |
| APR/MAY/JUNE | 45 | 0 | 0 |

GOALS AND ACTUAL NEW CLUBS CUMULATIVE



GOALS AND ACTUAL MEMBERS CUMULATIVE



DROPPED CLUBS: 1

20 CLUBS OF 39 ADDED 1 OR MORE NEW MEMBERS

GENDER DISTRIBUTION

| | |
|----------------------|--------------|
| MALE | 313 (54.15%) |
| FEMALE | 265 (45.85%) |
| NON BINARY | 0 (0.00%) |
| PREFER NOT TO ANSWER | 0 (0.00%) |

DROPPED MEMBERS

[CLICK HERE FOR CUMULATIVE MEMBERSHIP DATA](#)

| | |
|----------------|-----------|
| DECEASED | 8 |
| CLUB CANCELLED | 0 |
| OTHER | 40 |
| TOTAL | 48 |

TOTAL FAMILY UNIT MEMBERS 109

FAMILY MEMBERS PAYING HALF DUES 56